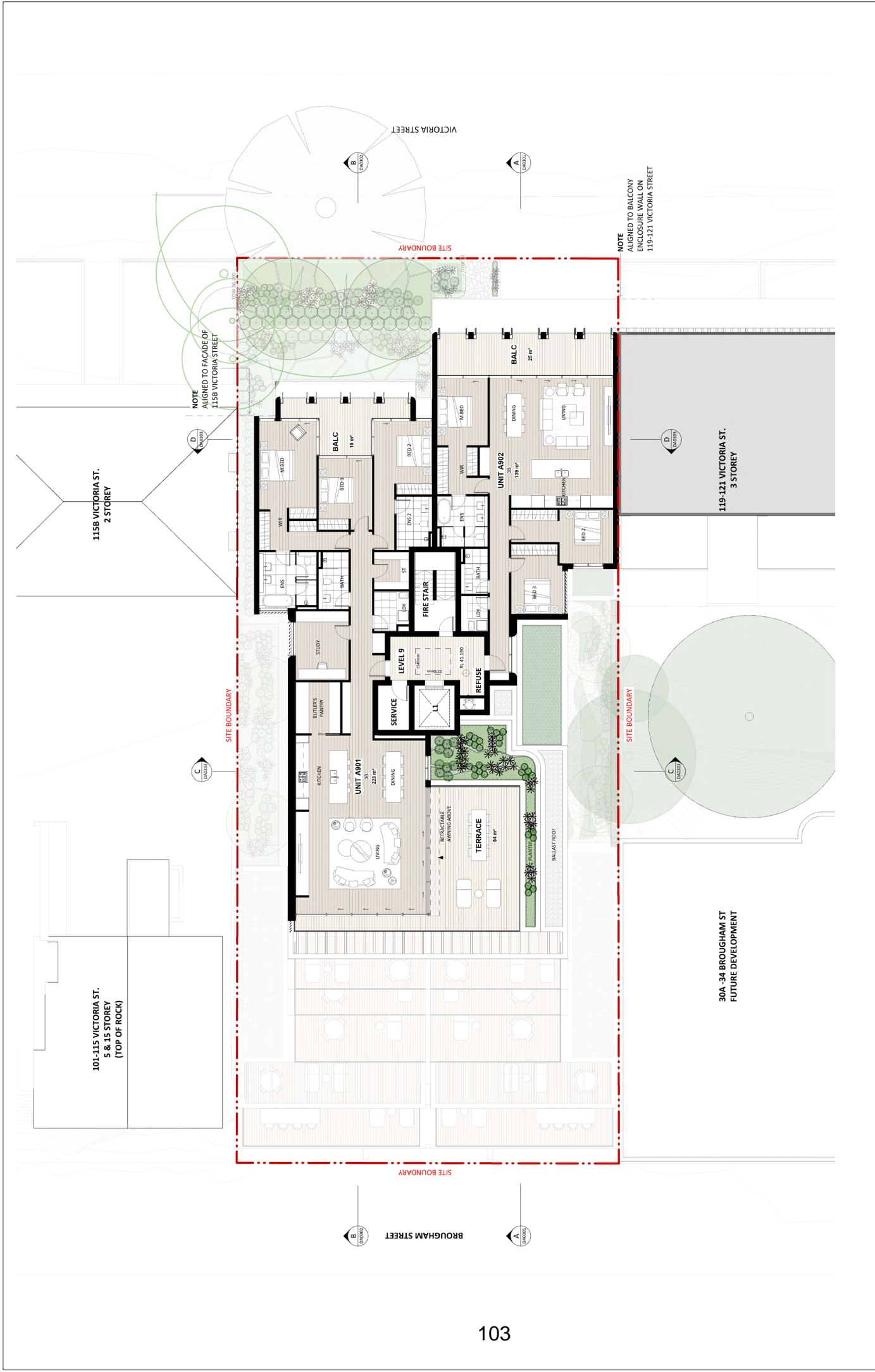


# **Attachment A3**

**Selected Drawings**





NOTE  
ALIGNED TO BALCONY  
ENCLOSURE WALL ON  
119-121 VICTORIA STREET

NOTE  
ALIGNED TO FACADE OF  
115B VICTORIA STREET

30A-34 BROUGHAM ST  
FUTURE DEVELOPMENT

115B VICTORIA ST.  
2 STOREY

101-115 VICTORIA ST.  
5 & 15 STOREY  
(TOP OF ROCK)

NO. 1. REVISIONS	BY	DATE	REVISIONS NOTES
1. 115B FUTURE DEVELOPMENT			
DATE	SCALE	PROJECT	PROJECT TITLE
18/06/24	1:100@A1, 1:200@A3	117 VICTORIA ST POTTS POINT, NSW 2011	LEVEL 09 FLOOR PLAN
DESIGNER	SCALE	CLIENT	DATE
DA0109	5 m	117 VICTORIA ST POTTS POINT, NSW 2011	1
ARCHITECT	DATE	PROJECT	PROJECT TITLE
Koichi Takada Architects	18/06/24	117 VICTORIA ST POTTS POINT, NSW 2011	LEVEL 09 FLOOR PLAN
NO. 1. REVISIONS	BY	DATE	REVISIONS NOTES
1. 115B FUTURE DEVELOPMENT			
DATE	SCALE	PROJECT	PROJECT TITLE
18/06/24	1:100@A1, 1:200@A3	117 VICTORIA ST POTTS POINT, NSW 2011	LEVEL 09 FLOOR PLAN
DESIGNER	SCALE	CLIENT	DATE
DA0109	5 m	117 VICTORIA ST POTTS POINT, NSW 2011	1
ARCHITECT	DATE	PROJECT	PROJECT TITLE
Koichi Takada Architects	18/06/24	117 VICTORIA ST POTTS POINT, NSW 2011	LEVEL 09 FLOOR PLAN





